

# Quick Start Guide

## Oregon Scientific WM-918, WMR-928N, WMR-918 and WMR-968 Radio Shack WX-200/ Radio Shack Wireless

For the best results follow all of the instructions on the following pages to quickly access real-time weather data via the Weather View 32 software. For additional information on Getting Started see the User Guide on pages 7 through 23.

### Installing Weather View 32

1. Exit all programs.
2. Insert the Weather View 32 software compact disc into your CD-ROM drive.
3. The Weather View 32 InstallShield Wizard appears automatically. Click on **Next** to Continue.
4. The Weather View 32 license agreement appears. Read the licensing agreement, and if you accept the terms, select the **I accept** option. Select **Next**. (If you select I do not accept, you will exit the setup program when you click Next.)
5. The Destination Folder window appears. Select **Next**.  
Advanced Setup: change the installation folder.
6. The Installing window appears. Wait while the software installs on your computer.
7. Finally the InstallShield Wizard Completed window appears. Select **Finish**. Remove the Weather View 32 software compact disc from your CD-ROM drive.

### Startup

1. Start the Weather View 32 program.
2. Enter the serial number from the User Guide cover, bottom of the page. All letters are CAPITALIZED. The remaining characters are numerals. Click on **Continue**.
3. The Import Weather Data From Previous window appears.  
**New Setup:** Click on the **Do Not Import Data and Continue button**  
**Upgrade Setup:** Click on the **Import Data** button. A Windows Explorer Browse button appears. Browse to C:/Program Files/Weather View 32 600 folder or the old Weather View 32 Installation folder
4. The Current Station #01 Weather View window appears. Each time Weather View 32 starts, this window will appear. The startup window displays a sunset scene over Pacific ocean.

Continue the Quick Start process on page 2.

The screenshot shows the 'Weather View Properties' dialog box with the 'Station Inf.' tab selected. The dialog is divided into two main sections: 'Station Location and Identification' and 'Degree Day Calc. Bases'.

**Station Location and Identification:**

- Station ID: Weather View
- Station City: Amity
- Station State: Oregon
- Station Latitude (Decimal): 45.14608, with radio buttons for North (selected) and South.
- Station Longitude (Decimal): 123.1333, with radio buttons for West (selected) and East.
- Station Elevation in Feet: 320

**Degree Day Calc. Bases:**

- Heating °F: 65
- Cooling °F: 65

Integration method will be used when working with W/V32 data. Max/Min method otherwise.

Values entered above will be used throughout W/V32 in determining degree days heating and cooling. Normal values are 65°F for both heating and cooling.

A 'Close' button is located at the bottom right of the dialog.

### Setup—Weather View Properties, Station Information

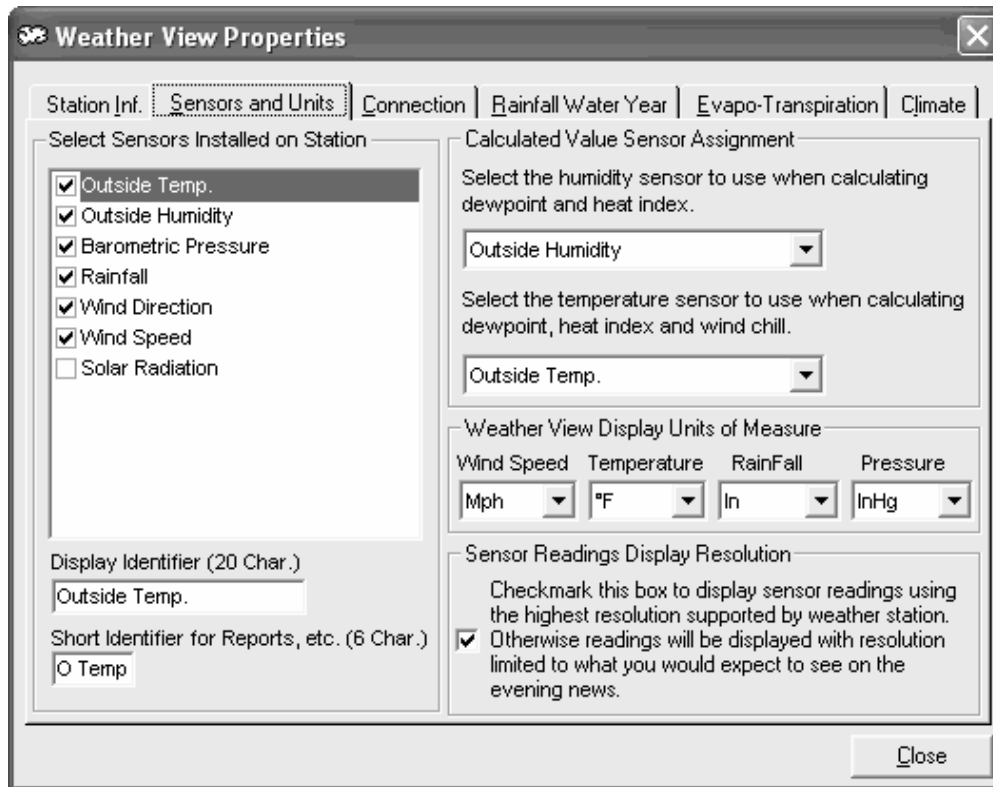
1. Click on the **Setup** menu. An menu item list appears.
2. Select **Weather View Properties**. Enter the correct data for your location. If you do not have the latitude, longitude and elevation, complete the **Climate** window first (below).
3. Station ID: Enter a descriptive name for your weather station.
4. Station City: Enter your city.
5. Station State: Enter your state.
6. Station Latitude: Enter the latitude of your station in digits to the ten-thousandth decimal place. Indicate North or South by marking the appropriate button.
7. Station Longitude: Enter the longitude of your station to the ten-thousandth decimal place. Indicate East or West by marking the appropriate button.
8. Station Elevation in Feet: Enter the elevation from Sea Level of the weather station.

---

### Setup—Weather View Properties, Climate tab

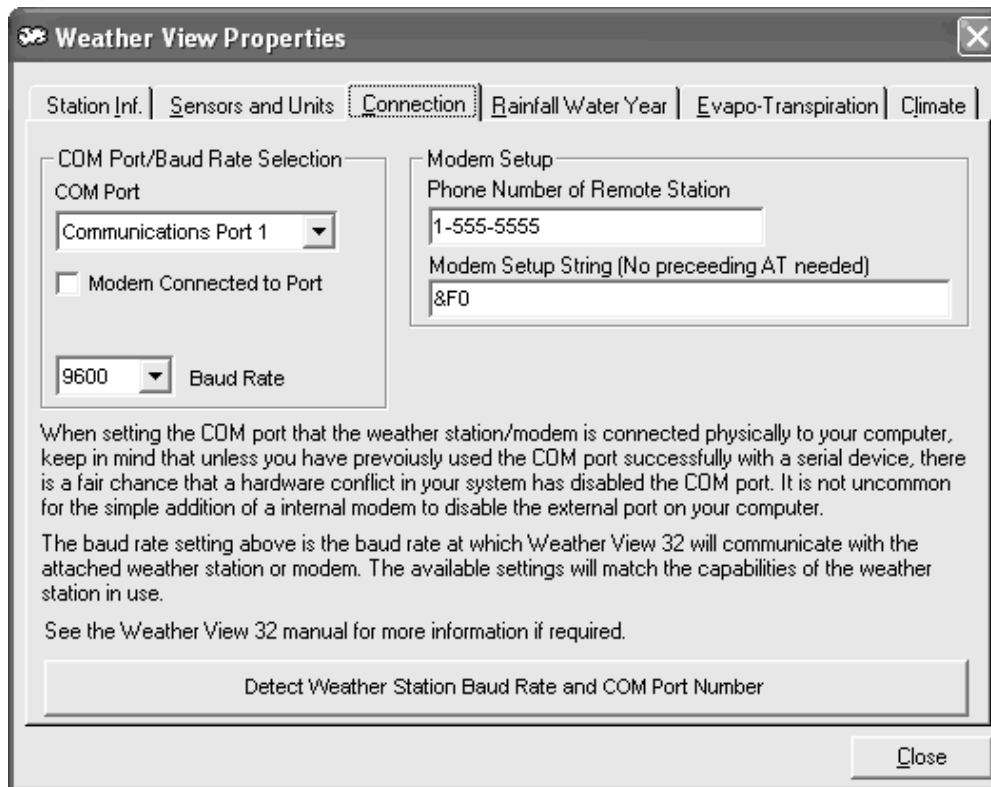
1. From the **Station Information** tab, select the **Climate** tab. Under normal circumstances choose the site closest to the weather station's physical location.
2. State: Select the state of the Climate Database to use. (From the existing climate database within Weather View 32 of over 8000 reporting sites in the United States.)
3. City or other identifier: Select the city of the Climate Database to use.

Note: By selecting the site closest to the weather station's physical location the latitude and longitude is provided. The selected site's elevation may be similar or different to the weather station's. When appropriate, use the information exactly as displayed to complete the Station Information window.



## Setup—Weather View Properties, Sensors and Units of Measure tab

1. Go to the **Setup** menu item and select **Weather View Properties**.
2. Select the **Sensors and Units** tab. The window above appears.
3. Select Sensors Installed on Station: Mark all installed and functional sensors connected to the weather station.
4. Display Identifier: When an item in the Installed Sensors List is highlighted, the Display Identifier of that sensor displays in the text box labeled Display Identifier. This value can be changed by typing in a new ID in the text box.
5. Short Identifier: Enter an additional shorter identifier for reports.
6. Humidity Sensor for calculations: Select the humidity sensor to use for calculating dewpoint and heat index.
7. Temperature Sensor for calculations: Select the temperature sensor to use when calculating dewpoint, heat index, and wind chill.
8. Display Units of Measure: Choose the Units of Measure for Wind Speed, Temperature, Rainfall, and Pressure for Weather View 32 to use for sensor data output. These settings are independent of the units of measure the weather station displays or outputs.
9. Sensor Readings Display Resolution: Check the box to display sensor readings using the highest resolution supported by the weather station. If the box is not checked, readings display using the resolutions you would expect to see on the evening news.
10. Continue to the Connection Tab.



### Setup—Weather Station Properties, Connection tab

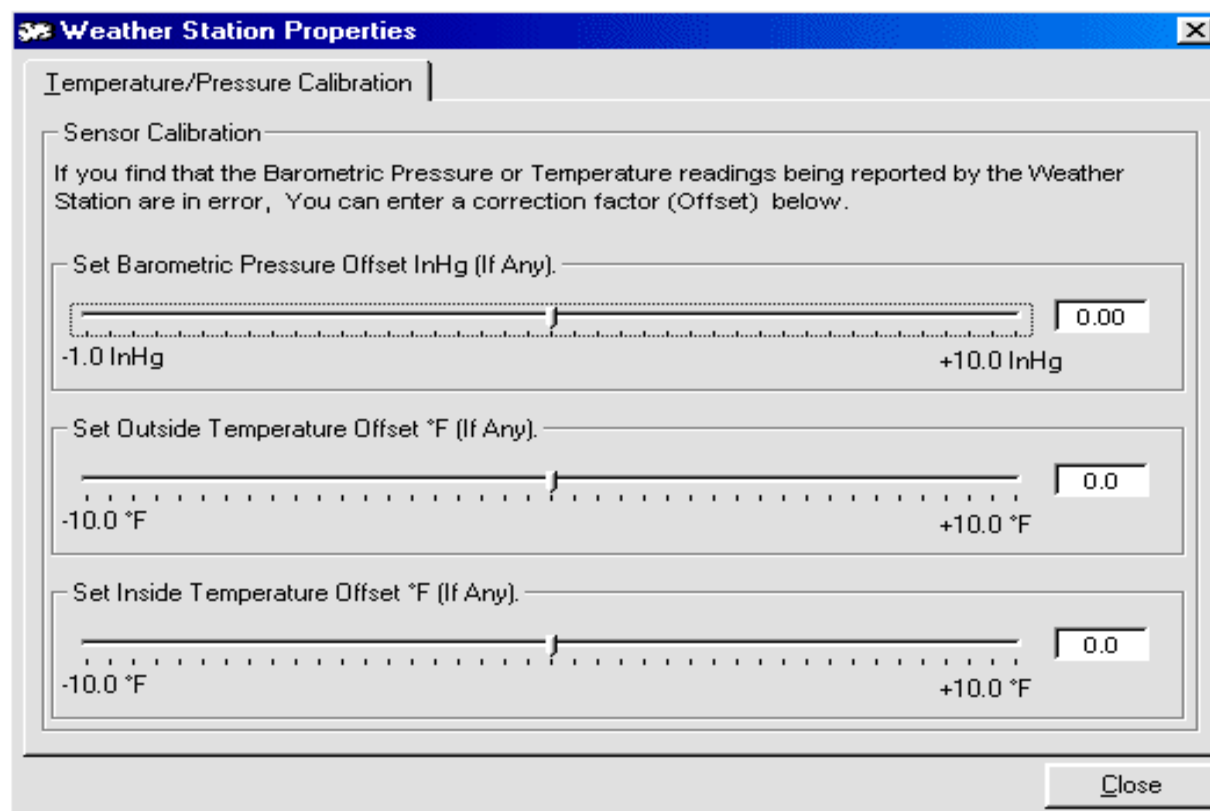
1. Take a moment to physically connect the weather station to the computer via either a serial port or a USB Converter. Double check all connections to make sure they are tight. Modem Users, see note below.
2. Go to the **Connection tab**.
3. **Click on the Detect Weather Station Baud Rate and Com Port Number bar.**
4. Minimize Weather View 32. Use the cursor to go to the **Windows Start button**.
5. Highlight **My Computer**
6. **A menu appears, select Properties, then Hardware tab, and finally Device Manager.**
7. **Wait while the list is created. Find the PORTS list Item.**
8. **Click on the + to change it to a -**
9. **You should see a COM Port listed.** (A USB port will say something like “USB to Serial Port Communications Port 4”. If a serial port is available, it will say something like “serial port COM1).
10. Maximize Weather View 32. Click on the COM Port list and select the COM port from Step #8.
11. Select Close. Go to Monitor Weather. You should be able to Monitor Weather now.
12. If unable to Monitor Weather now, review page 6.

Modem users: Modem users see User Guide Page 18 and 19.

---

**Note:** Call Weather View 32 tech support at 503-864-3217 for help with any questions or problems during this process.

---



### Setup—Weather Station Properties, Top tab

If you need to **adjust the reported inside/outside temperature or barometric pressure** do so here.

1. If you need to adjust the reported outside temperature or barometric pressure, manipulate the sliders to enter the desired values.
2. Select Close to exit and save changes.

---

**Note:** Backup your data regularly. See page 10 of the User Guide for additional information.

---